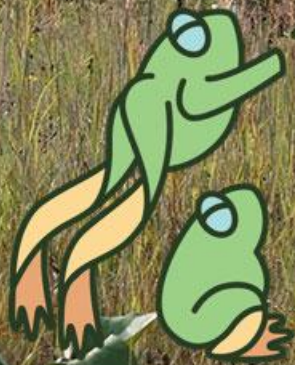




THE
**Riveredge
School**



Thank You!



THE
**Riveredge
School**





This is

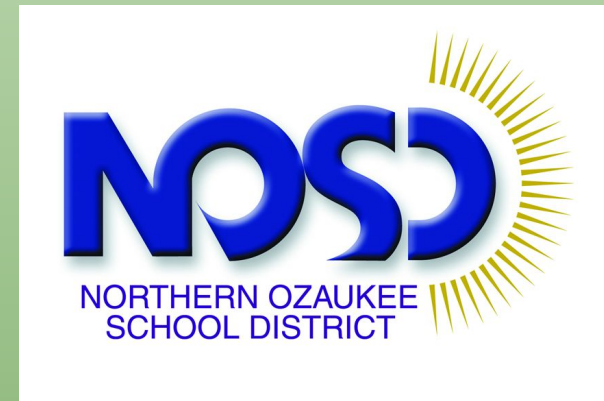


THE
**Riveredge
School**

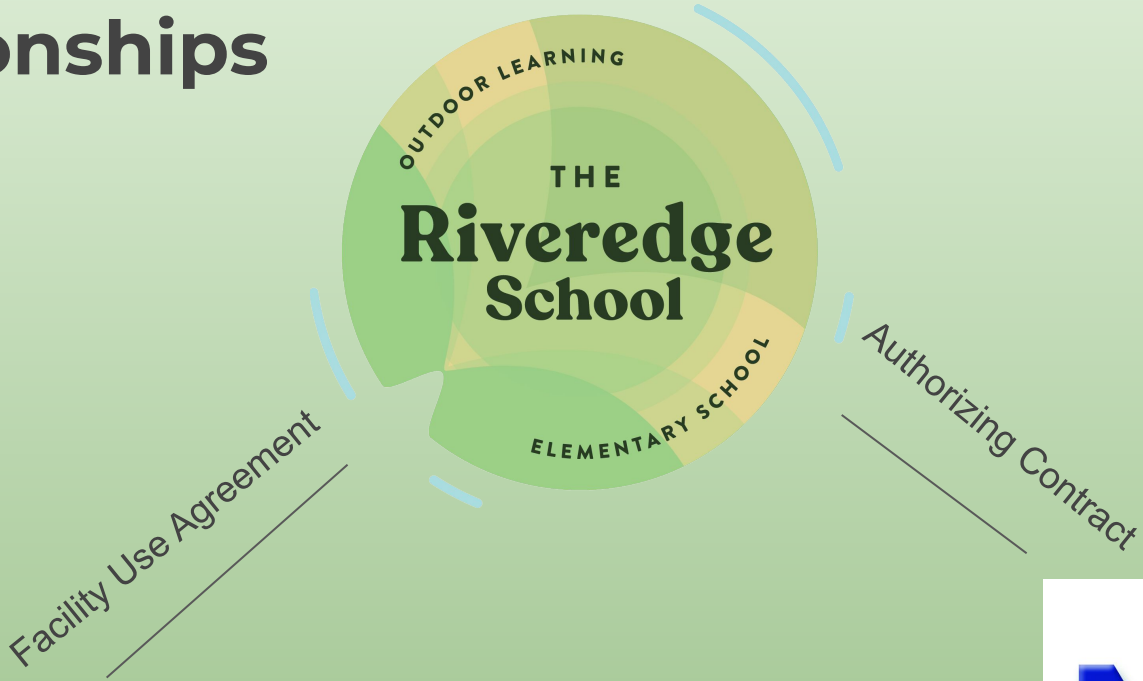


THE
Riveredge
School

Partners



Relationships



RIVEREDGE
NATURE CENTER

DPI Charter School Planning & Implementation Grant - Initial Developer/Authorizer on behalf of ROLES



This is



THE
Riveredge
School



Riveredge Nature Center Map





Kindergarten Ski lesson.



THE
**Riveredge
School**



What is a Charter School?

- ❖ Wisconsin established charter schools to **foster an environment for innovation and parental choice.**
- ❖ They can exist as **living laboratories** that influence the larger public school system.
- ❖ Regular schools can observe and learn from what happens in the charter school and make similar improvements. Through this process, **the entire public school system is continually challenged to improve itself.**
- ❖ The Riveredge Outdoor Learning Elementary School is a non-instrumentality charter school authorized through NOSD.

The Mission of The Riveredge School...

Is to create a laboratory for outdoor learning which amplifies the outcomes of public education, serves learners of all abilities and needs, fosters a deep connection to the environment, & prepares students for success in school and life.



This is

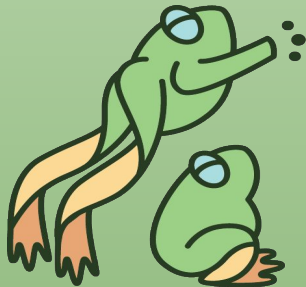


THE
Riveredge
School



The Vision of The Riveredge School...

is to create an environment where students are connected to the outdoors every day.





THE
Riveredge
School

Our Three Pillars



Nature

Inquiry

Community



Nature, community and inquiry in action



Nature, community and inquiry in action





THE Riveredge School

This is:

ned
Stop growing

hey exist
fins
at hurt
s in body

Do they live in the sea?

From river
dinos
Did dinosaurs eat them?

River
used

Do they descend from dinosaurs?

Wonders about Sturgeon

Why do they have whiskers?

Why do they have spikes?

Why do they look like catfish?

Why do sturgeon swim?

Why does RNC keep them?

Why are some white & black?

Why do sturgeon have scaly humps on backs?

Where did their name come from?

Why does their nose go up on the end?

1 mi.

5 mi.

10 mi.

50 mi.

60 mi.

100 mi.

600 mi.

1,000,000 mi.

36 big # m
relation



Current School Year 20-21

- Current student population is 87 students.
- Five total classes of 16-18 students
 - K, 1st, 2nd, 3rd, 4th/5th
- Staff includes: 5 teachers, 5 paraprofessionals, principal and an administrative assistant.
- Parents provide snacks, lunches, and transportation.
- Tuition free, but typical student fees (\$85)
- Oakiwear is provided for 5K-1st grade students.
- Bento boxes are provided for all students.





THE
Riveredge
School

3rd grade Social Emotional Learning morning meeting

Next School Year 21-22

- Daily schedule and calendar will be close to that of the Northern Ozaukee School District.
- Total student population not to exceed 108 students.
- Six total classrooms and teachers projected
- Grades 5K - 5th

In the fall we hope to see an additional class of 16-18 students added, along with a teacher. Maximum student population will not exceed 108 students.



The future of The Riveredge School...





THE
Riveredge
School

This is



THE
**Riveredge
School**



Riveredge Educators supporting our learning





THE
Riveredge
School



This is



THE
**Riveredge
School**

Is The Riveredge School a good fit our family?

- My child and I believe that being outdoors most of the school day, every day, is the best learning environment.
- My child is comfortable with learning outdoors most of each day in all weather conditions.
- My child is able to manage their own belongings in a developmentally appropriate way.
- Asking lots of questions and exploring a variety of different answers is enjoyable for my child.
- Solving problems and thinking critically about different ideas is a challenge that my child enjoys.
- My child feels comfortable in a variety of natural settings.
- If your child adapts to changes in daily routines and schedules with ease.
- My child enjoys exploring and moving their body.
- My child comes alive when she/he interacts with nature.
- Managing dirty, wet, and smelly clothes and lots of gear on a daily basis doesn't bother me.
- My child thrives when engaged in free-play and less structured activities.
- Engaging in academics in an outdoor classroom is something my child is capable of doing.
- My child is a hands-on learner.
- Getting wet, dirty, and sweaty doesn't bother my child!
- Playing an active role in learning comes naturally to my child.

If you agree with the majority of these statements, The Riveredge School might be the right fit for your family!

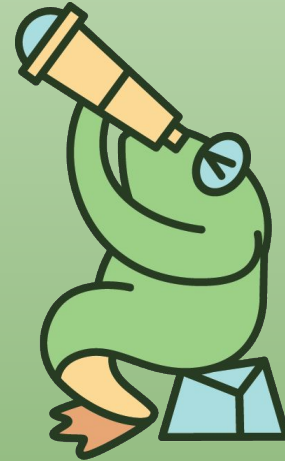
This is



THE
Riveredge
School

How do we apply to The Riveredge School?

- ❑ Attend an informational session for the school (strongly encouraged).
- ❑ Click on our website TheRiveredgeSchool.org
- ❑ *Locate Family Resources and then Prospective Students*
- ❑ *Read through the section on How to Enroll*
- ❑ *Contact the Riveredge School office - Emily Weiss eweiss@nosd.edu or the Have a Question section on our Website.*



This is



THE
**Riveredge
School**



Lottery Process

- ❑ Open seats will be filled beginning with the highest grade available (for the 2020-21 school year, this will be 5th grade) and move down to 5K.
- ❑ Siblings in the same grade or younger grades will be given concurrent priority.
- ❑ Once given a seat, placed students must accept or decline by the date stated in the acceptance letter. Declined seats are given to students on the waiting list in the order determined by the lottery.
- ❑ Waitlists roll over from year to year, but to keep a place on the waitlist, a new application must be submitted to the school by April 30, 2020.
- ❑ If seats are available after the lottery (early May), additional students may enroll through the “alternative enrollment” process. Those seats will be filled on a first-come, first-serve basis.
- ❑ Open enrollment dates are Feb 1st to April 30th and apply online through the Wisconsin DPI website if not a resident of NOSD

Riveredge Nature Center Nature-Based 4K Program

Preference can not be given to students enrolled in the

West Bend School District

nature-based 4K program at Riveredge Nature Center.

The Riveredge Outdoor Elementary School is a separate program from the 4K program, students must enroll into the

Northern Ozaukee School District.

This is



THE
**Riveredge
School**



Preference Groups

1. Students currently enrolled in The Riveredge School
2. Children of The Riveredge School teachers and staff, Governance Council members, or school's founders (not to exceed 10% of the overall enrollment)
3. Siblings of currently enrolled students
4. Waitlisted applicants from the previous year



This is:



THE
**Riveredge
School**



Suggested Research

Visit our website: <https://theriveredgeschool.org/>

Facebook/Instagram: The Riveredge School

Check out our blog: <https://theriveredgeschool.org/blog/>

Come visit with your family: riveredgenaturecenter.org

Read about the Forest School tradition.

Visit www.childrenandnature.org/learn

Dressing for nature school (great videos online)

Talk with your child about how they feel about an outdoor school experience.



Frequently asked questions



Start and stop time

We start each day at 8:35am with drop off beginning at 8:20am

We are exploring before and after school care with our local YMCA and Riveredge.

Calendar

Transportation

We are currently not yet able to provide transportation to and from school but a number of families have organized carpools

Lunch program

The students provide their own lunches and students tend to eat really well.



THE
**Riveredge
School**

