



THE
**Riveredge
School**



Thank You!

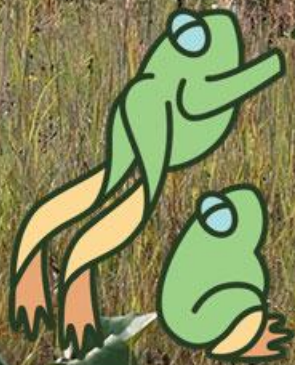
More Info?

Please enter your name, email address, and how you learned about this Virtual Information Session into the Chat.

We will email you our latest newsletter and respond to any other questions you may have regarding our school and the enrollment process.

Please mute during the slide presentation and unmute afterwards during the question and answer session.

Thank you!



THE
**Riveredge
School**





This is

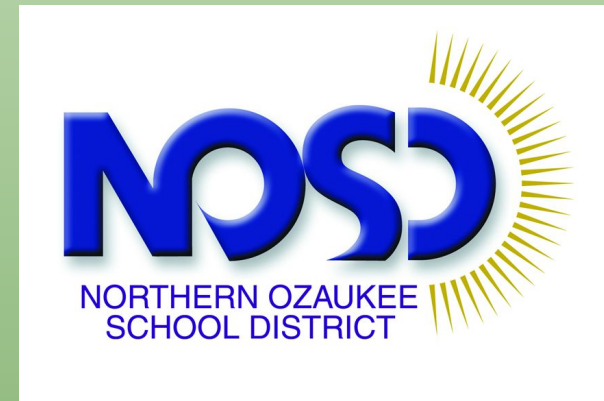


THE
**Riveredge
School**

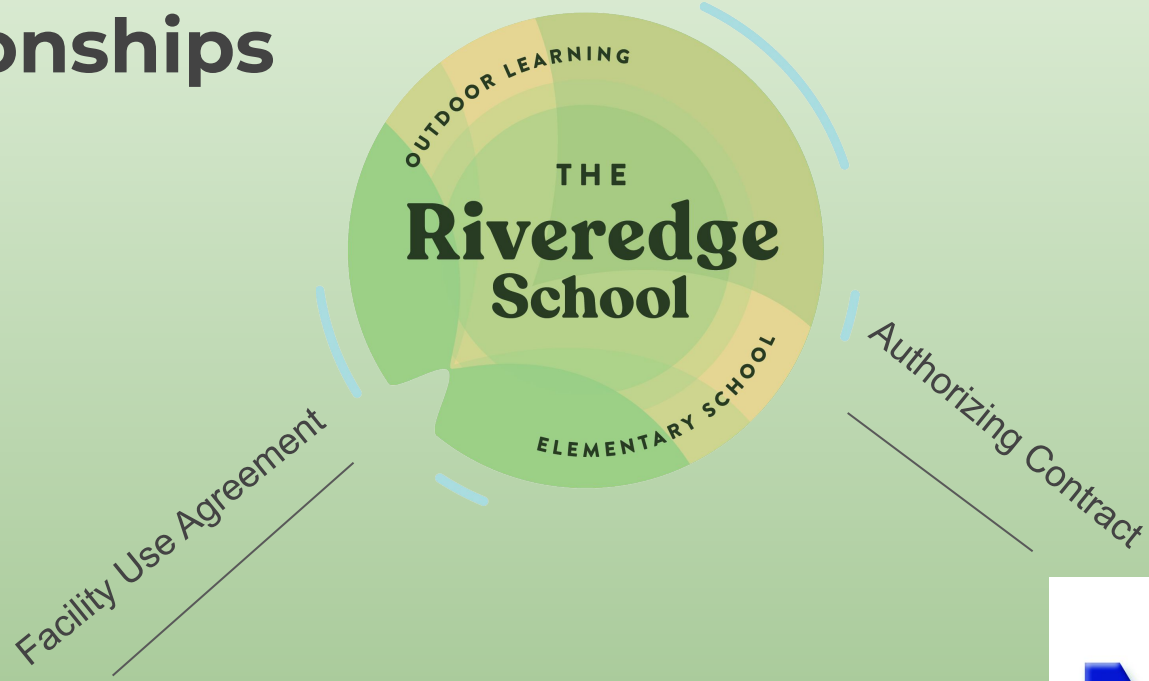


THE
Riveredgo
School

Partners



Relationships



RIVEREDGE
NATURE CENTER

DPI Charter School Planning & Implementation Grant - Initial Developer/Authorizer on behalf of ROLES



This is



THE
Riveredge
School



Riveredge Nature Center Map





Kindergarten Ski
lesson.



THE
Riveredge
School



What is a Charter School?

- ❖ Wisconsin established charter schools to **foster an environment for innovation and parental choice.**
- ❖ They can exist as **living laboratories** that influence the larger public school system.
- ❖ Regular schools can observe and learn from what happens in the charter school and make similar improvements. Through this process, **the entire public school system is continually challenged to improve itself.**

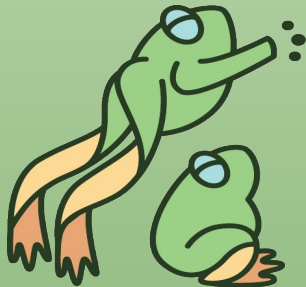
The Mission of The Riveredge School...

Is to create a laboratory for outdoor learning which amplifies the outcomes of public education, serves learners of all abilities and needs, fosters a deep connection to the environment, & prepares students for success in school and life.



The Vision of The Riveredge School...

is to create an environment where students are connected to the outdoors every day.



This is



THE
Riveredge
School



This is



THE
Riveredge
School



Academics:

Reading

- Small groups instruction
- Diverse classroom libraries
- Guided Reading
- Phonics

Percent of Students Scoring above the 41st percentile on NWEA MAP Testing (Fall)

2019- 77%

2020- 81.5%

2021- 85%



THE
Riveredge
School

Academics:

Math

- Bridges Math curriculum
- Small group instruction

Percent of Students Scoring above the 41st percentile on NWEA MAP Testing (Fall)

2019- 65.5%

2020- 79.3%

2021- 80.3%



THE
Riveredge
School

Attendance and Retention

Year	Daily Ave.	Enrollment
2019	94.1%	66
2020	95.5%	87
2021	97%	101



THE
**Riveredge
School**



THE
Riveredge
School

Our Three Pillars

Nature

Inquiry

Community



Nature, community and inquiry in action



Nature, community and inquiry in action





THE Riveredge School

This is:

ned
stop growing
they exist
fins
at hurt
s in body
from river
dinos
ver 100y
River
used

Do they descend from dinosaurs?

Wonders about Sturgeon

1 mi.
5 mi.
10 mi.
50 mi.
60 mi.
100 mi.
600 mi.

Why do they have whiskers?

Why are some white & black?

Why do they have spikes?

Why do sturgeon have scaly humps on backs?

Why do they look like catfish?

Why do sturgeon swim?

Where did their name come from?

Why does RNC keep them?

Why does their nose go up on the end?

1,000,000 m
36 big # m
relation

Current School Year 21-22

- Current student population is 101 students.
- Five total classes of 16-18 students
 - K, 1st, 2nd, 3rd, 4th and 5th
- Staff includes: 6 teachers, 6 paraprofessionals, principal and an administrative assistant.
- Parents provide snacks, lunches, and transportation.
- Tuition free, but typical student fees (\$85)
- Oakiwear is provided for 5K-1st grade students.
- Bento boxes are provided for all students.





THE
Riveredge
School

Earth Day Oak Thicket Project

The future of The Riveredge School...





THE
Riveredge
School

3rd grade students examining forces and motion

This is



THE
Riveredge
School



Riveredge Educators supporting our learning





THE
**Riveredge
School**

Sometimes you don't want to take
your skis off even during lunch!



This is



THE
**Riveredge
School**

Is The Riveredge School a good fit our family?

- My child and I believe that being outdoors most of the school day, every day, is the best learning environment.
- My child is comfortable with learning outdoors most of each day in all weather conditions.
- My child is able to manage their own belongings in a developmentally appropriate way.
- Asking lots of questions and exploring a variety of different answers is enjoyable for my child.
- Solving problems and thinking critically about different ideas is a challenge that my child enjoys.
- My child feels comfortable in a variety of natural settings.
- If your child adapts to changes in daily routines and schedules with ease.
- My child enjoys exploring and moving their body.
- My child comes alive when she/he interacts with nature.
- Managing dirty, wet, and smelly clothes and lots of gear on a daily basis doesn't bother me.
- My child thrives when engaged in free-play and less structured activities.
- Engaging in academics in an outdoor classroom is something my child is capable of doing.
- My child is a hands-on learner.
- Getting wet, dirty, and sweaty doesn't bother my child!
- Playing an active role in learning comes naturally to my child.

This is



THE
Riveredge
School

How do we apply to The Riveredge School?

- ❑ Attend an informational session for the school (strongly encouraged).
- ❑ Click on our website [TheRiveredgeschool.org](https://www.theriveredgeschool.org)
- ❑ *Locate Family Resources and select Prospective Students*
- ❑ Complete & submit the [ROLES application](#) and [online open enrollment application](#) (if a non-resident of NOSD) before **April 29th, 2022**.
- ❑ Contact the Riveredge School office with enrollment questions? Emily Weiss: eweiss@nosd.edu or complete the Have a Question? section on our website.



This is



THE
**Riveredge
School**



Enrollment & Lottery Information

- ❑ Returning students are given first preference to seats at ROLES (grades 1-5).
- ❑ Preference Groups are placed before the lottery when applicable. This includes siblings to returning students. (Usually some kindergarten seats are filled by siblings.)
- ❑ Per DPI guidelines, a lottery is used to fill remaining open seats at each grade level. These names also may be placed onto a grade level waiting list after the lottery.
- ❑ Please see our [“Enrollment and Lottery Process 2022”](#) for detailed information regarding our lottery process and preference groups. In addition, our [FAQs Lottery and Enrollment 2022-23 website page](#) is a helpful resource.
- ❑ The lottery will be held on Thursday, May 12th, 2022, at 9:00-11:30 am. Optional viewing will be available through the link on our website.

Riveredge Nature Center Nature-Based 4K Program

Preference can not be given to students enrolled in the

West Bend School District

nature-based 4K program at Riveredge Nature Center.

The Riveredge Outdoor Elementary School is a separate program from the 4K program, students must enroll into the

Northern Ozaukee School District.

This is



THE
**Riveredge
School**

Nature provides a creative space to write and think!.

This is



THE
**Riveredge
School**



Suggested Research

Visit our website: <https://theriveredgeschool.org/>

Facebook/Instagram: The Riveredge School

Check out our blog: <https://theriveredgeschool.org/blog/>

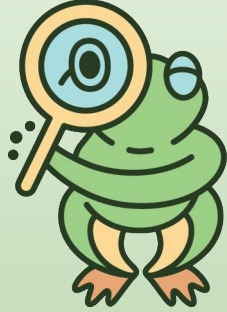
Come visit with your family: riveredgenaturecenter.org

Read about the nature based school tradition.

Visit www.childrenandnature.org/learn



Frequently asked questions



Start and stop time

We start each day at 8:35am with drop off beginning at 8:20am

We are exploring before and after school care with our local YMCA and Riveredge.

Calendar - Follows Northern Ozaukee School District (SAME 1st & last days of school, winter & spring breaks, holidays). Some Teacher Work Days & days off are different from NOSD.

Transportation

We are not able to provide transportation to and from school but a number of families have organized carpools

Lunch program - The students provide their own lunches and students tend to eat really well.

Testimonials

“This is the third year that our son has been attending ROLES and we couldn’t be happier. His academic growth has been significant. He is thriving both socially and in his understanding of the world around him. We are grateful to have this amazing opportunity!” J. Lloyd-Parent

Our children have attended ROLES for the last two years and we LOVE this school! There are wonderful teachers fabulous opportunities and the beautiful outdoor education environment.
ROLES parent



My son looks forward to school now that he has attended Riveredge which is not the case at his former school. Interest led learning is ideal for him. Parent of a 4th grader



This is

THE
**Riveredge
School**

