

THE
**Riveredge
School**



More Info?

Please enter your name, email address, and how you learned about this Virtual Information Session into the chat.

We will email you our latest newsletter and respond to any other questions you may have regarding our school and the enrollment process.

Please mute during the slide presentation and unmute afterwards during the question and answer session.

Thank you!



Cindy Raimer
The Riveredge School
Director of Education





What is a Charter School?

- ❖ Wisconsin established charter schools to **foster an environment for innovation and parental choice.**
- ❖ They can exist as **living laboratories** that influence the larger public school system.
- ❖ Regular schools can observe and learn from what happens in the charter school and make similar improvements. Through this process, **the entire public school system is continually challenged to improve itself.**



WISCONSIN DEPARTMENT OF
PUBLIC INSTRUCTION

DPI Charter School Planning & Implementation Grant

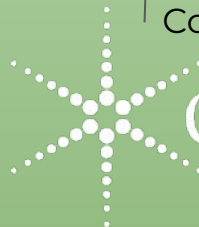


RIVEREDGE
NATURE CENTER



NORTHERN OZAUKEE
SCHOOL DISTRICT

Contracted Services



CESA 6
SMART THINKING.

ROLES AND RESPONSIBILITIES

Northern Ozaukee School District

- Annual performance monitoring
- Annual DPI authorizer report
- Charter contract
- Renewal decision

CESA 6

- Human Resources Services
- Payroll
- Accounting Services

Riveredge Nature Center

- Facilities Use negotiated through contract
- Contracted Services for Professional Development (i.e. Safety training for staff) and Student Learning (i.e. programming, stewardship, Adventure Programs and Leave No Trace Lessons)

Governance Council

- Contracts
- Policy Governance
- Fundraising
- Performance monitoring
- Budget oversight
- 501(c)(3) Management
- Advertising
- Leadership evaluation
- Grants
- Public relations

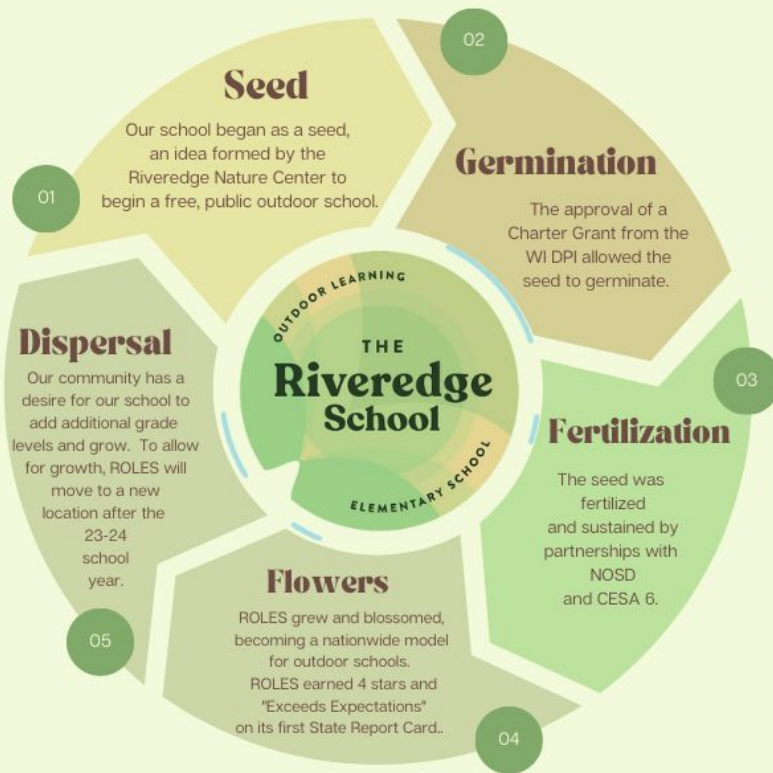
Director of Education/School Leadership

- Executes the program
- School operations
- Reports learning and performance
- School improvement
- Grants

The life cycle of plants starts from the seed form, which is germinated and gives rise to the first leaves known as seedlings. Following this, the growth of the plant continues, and it reaches a mature stage, then it pollinates and is dispersed.



The Life Cycle of ROLES



The Mission of The Riveredge School...

is to create a laboratory for outdoor learning which amplifies the outcomes of public education, serve learners of all abilities and needs, foster a deep connection to the environment, & prepare students for success in school and life.



The Vision of The Riveredge School...

is to create an environment where students are connected to the outdoors every day.



Our Three Pillars



Nature

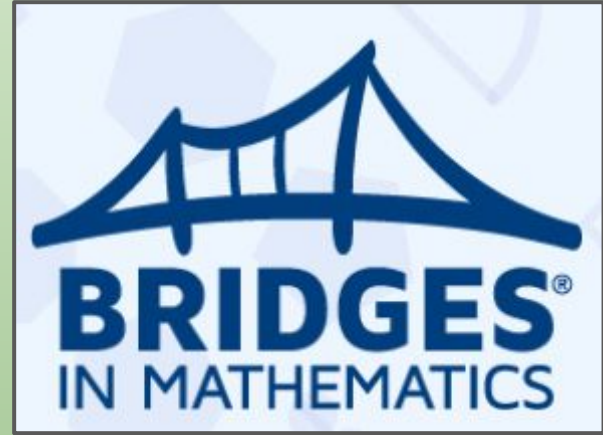


Inquiry

Community

Math Curriculum

Bridges in Mathematics is a comprehensive PK–5 curriculum that equips teachers to fully address state standards in a rigorous, engaging, and accessible manner. Students gain a deep understanding of concepts, proficiency with key skills, and the ability to solve complex problems. The inquiry based curriculum is composed of three distinct but integrated components: Problems & Investigations, Work Places and Number Corner.



We have also purchased Bridges Intervention materials to support students that need extra time or practice with a skill.

Bridges MATH Intervention Materials



We purchased the Bridges Intervention resources to support students who need more time, more opportunities and more support than others. The material is organized by content rather than grade, and each focused, 30-minute session provides everything an educator needs for small group instruction and progress monitoring.

Literacy Curriculum

We use Fountas and Pinnell IRA and phonics in all grade levels. Our Kg.-2nd grades also use Heggerty's phonemic awareness curriculum. Our reading instruction is blended with science and social studies themes in interdisciplinary units and project based learning.



Nature Based Art Curriculum

The arts integrated framework, created in partnership with Lynden Sculpture Garden, will enable teachers to explore the intersection of arts, culture and nature across the curriculum.



A Day in the Life of a ROLES student



Responsive Classroom Morning Meeting

Students gather for 20 minutes to build community, foster communication, strengthen relationships and trust, and encourage teamwork, communication and social emotional learning through daily activities and games.



A Day in the Life of a ROLES student



We use Bridges Math. In all grade levels our math is taught using a small group model. The teacher gives the main lesson, and students rotate in groups of six to a Number Corner lesson with the paraprofessional. Finally, they have an independent station where they do workstations or IXL. The model allows for teachers to differentiate instruction and provide enrichment to students ready to extend their learning and support or reteaching to others.

A Day in the Life of a ROLES student



Following math, students may take a hike on the 400 acre campus. Along the way, they have a snack, listen to a read-aloud and reading lesson, and our K-2 students participate in Heggerty's Phonemic Awareness. In winter, this trek may be on snowshoes or cross country skis. On warm days, this hike leads to one of the two hammock villages for reading instruction.

A Day in the Life of a ROLES student



Our students have daily reading instruction. Our small groups work with the teacher or paraprofessional at picnic tables while the other students independently read in the hammocks. During this instruction we also have Fountas and Pinnell phonics lessons that are differentiated to meet the needs of each group.

A Day in the Life of a ROLES student

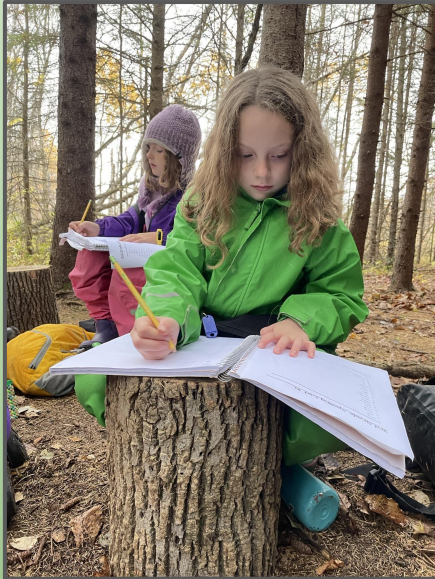


Lunch and Exploration

A picnic lunch and over 400 acres of woodlands, wetlands, ponds and prairies to explore!

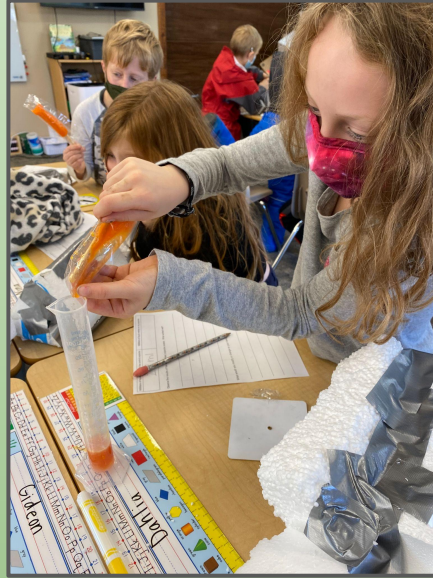


A Day in the Life of a ROLES student

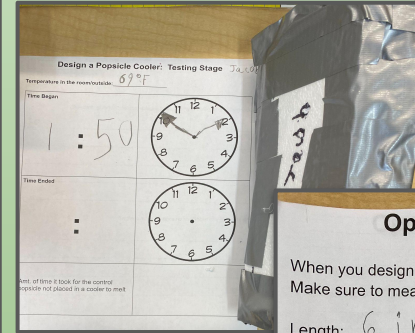


Writing

A Day in the Life of a ROLES student



Interdisciplinary Project Based Learning



Operation Save the Popsicle

When you design your cooler, it will be important for your popsicle to fit. Make sure to measure.

Length: 6 inch

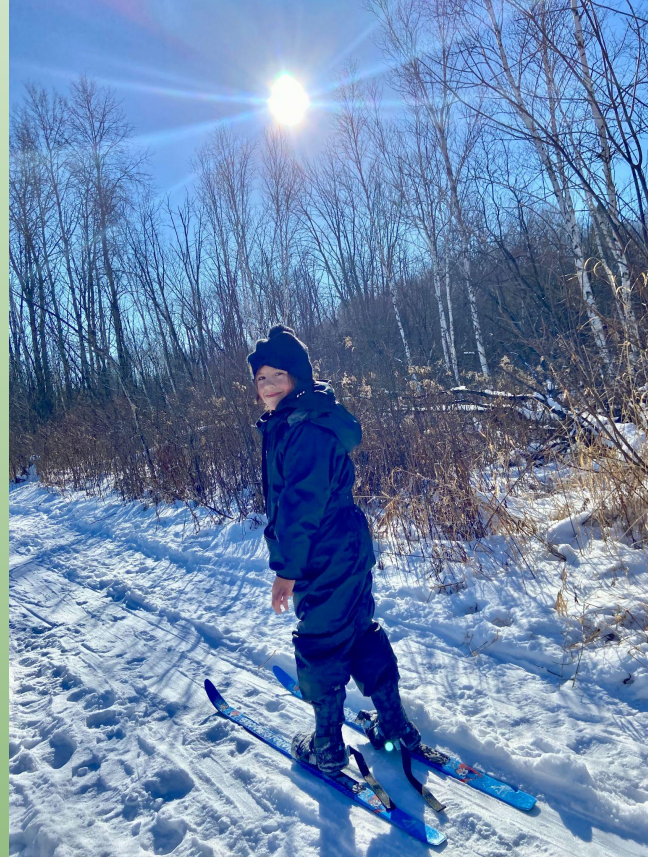
Width: 2 inch

Height: 2 inch

Other design ideas

White Styrofoam, cereal box,
Renew lining, 3 inch white foam.

Top 10 Reasons to send your students to ROLES



Reason 10

'If we want our children to move mountains, we first have to let them out of their chairs.'

-Nicolette Sowder



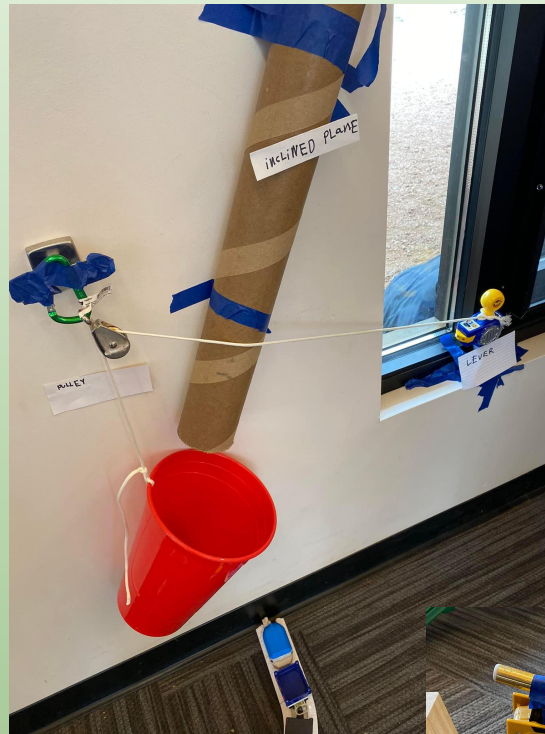
Reason 9

Interdisciplinary
Instruction and critical
thinking

Watch these videos of our 2nd graders in which they work in small groups to design Rube Goldberg machines using the six simple machines and study food chains, trophic cascades and the role of apex predators in the ecosystem.

[Rube Goldberg Video ex. 1](#)

[Rube Goldberg Video ex. 2](#)



Reason 8

Engagement....

our students like to hang around even after the school day ends.



Reason 7

Low class size.

All of our classes have 18 students or less.



Reason 6

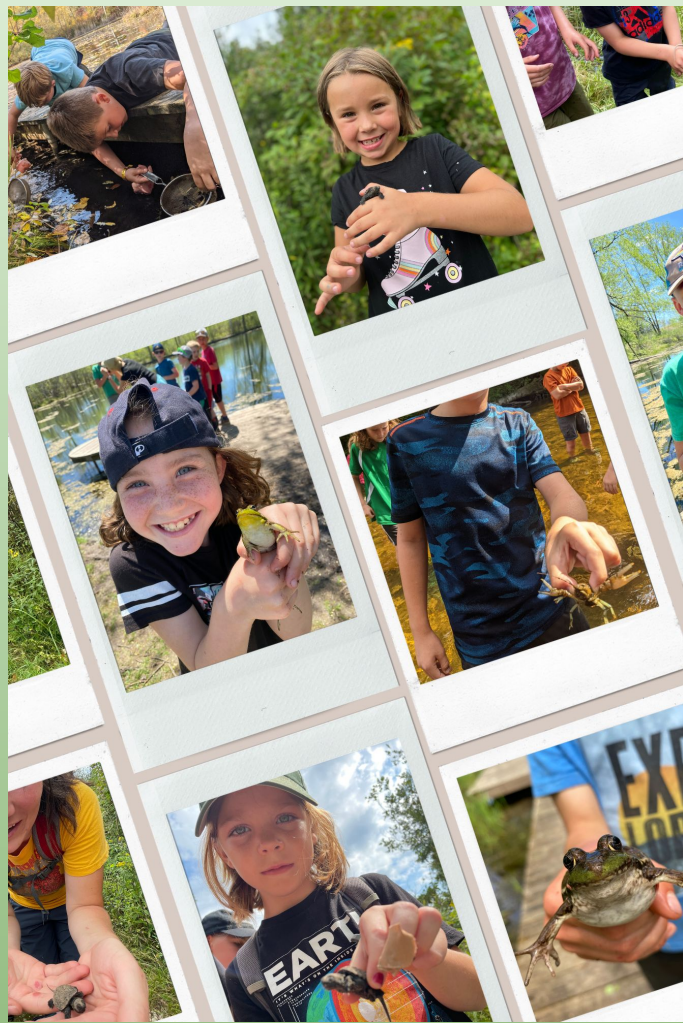
“Not all
classrooms have
four walls.”

-Margaret McMillan



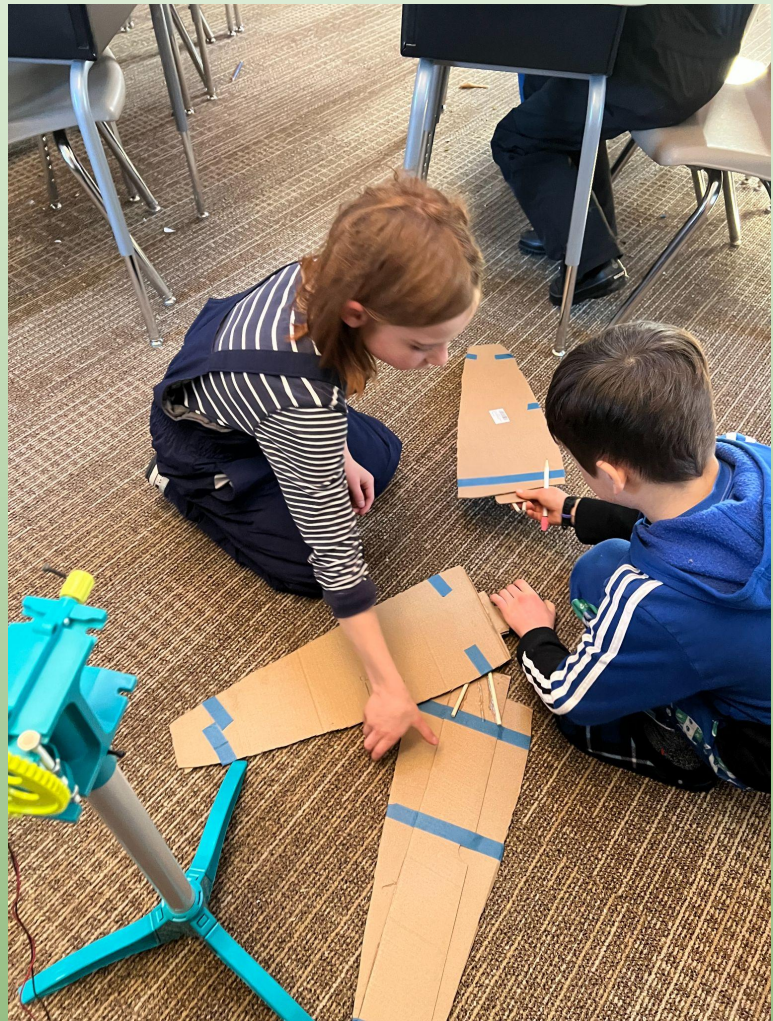
Reason 5

Other schools have class pets, we have an ecosystem.



Reason 4

Project based learning



Reason 3

“Play is the highest form of research.”

-Albert Einstein



Reason 2

Differentiated Instruction

Full time paraprofessionals in each classroom to support a small group learning model.

1:9 teacher to student ratio



Reason 1

“The best classroom, and the richest classroom, is roofed only by the sky.”

-Margaret McMillan



Is The Riveredge School a good fit our family?

- ☐ My child and I believe that being outdoors most of the school day, every day, is the best learning environment.
- ☐ My child is comfortable with learning outdoors most of each day in all weather conditions.
- ☐ My child is able to manage their own belongings in a developmentally appropriate way.
- ☐ Asking lots of questions and exploring a variety of different answers is enjoyable for my child.
- ☐ Solving problems and thinking critically about different ideas is a challenge that my child enjoys.
- ☐ My child feels comfortable in a variety of natural settings.
- ☐ If your child adapts to changes in daily routines and schedules with ease.
- ☐ My child enjoys exploring and moving their body.
- ☐ My child comes alive when she/he interacts with nature.
- ☐ Managing dirty, wet, and smelly clothes and lots of gear on a daily basis doesn't bother me.
- ☐ My child thrives when engaged in free-play and less structured activities.
- ☐ Engaging in academics in an outdoor classroom is something my child is capable of doing.
- ☐ My child is a hands-on learner.
- ☐ Getting wet, dirty, and sweaty doesn't bother my child!
- ☐ Playing an active role in learning comes naturally to my child.

How do we apply to The Riveredge School?

- ❑ Attend an informational session for the school (strongly encouraged).
- ❑ Click on our website www.theriveredgeschool.org
- ❑ *Locate Family Resources and select Prospective Students*
- ❑ *Complete & submit the [ROLES application](#) and [online open enrollment](#) application (if a non-resident of NOSD) before **April 28th, 2023.***
- ❑ *Contact the Riveredge School office with enrollment ?'s - Emily Weiss: eweiss@nosd.edu or complete the Have a Question? section on our website.*
- ❑ *Would you like a tour? Or do you have a question about our curriculum? Contact Cindy Raimer at craimer@nosd.edu*



Enrollment & Lottery Information

- ❑ Returning students are given first preference to seats at ROLES (grades 1-5).
- ❑ Preference Groups are placed before the lottery when applicable. This includes siblings to returning students. (Usually some kindergarten seats are filled by siblings.)
- ❑ Per DPI guidelines, a lottery is used to fill remaining open seats at each grade level. These names also may be placed onto a grade level waiting list after the lottery.
- ❑ Please see our “[Enrollment and Lottery Process 2023](#)” for detailed information regarding our lottery process and preference groups. In addition, our [FAQs Lottery and Enrollment website page](#) is a helpful resource.
- ❑ The lottery will be held on Thursday, May 11th, 2023, 9:00-11:30 am. Optional viewing will be available through the link on our website.

Riveredge Nature Center Nature-Based 4K Program

Preference can not be given to students enrolled in the

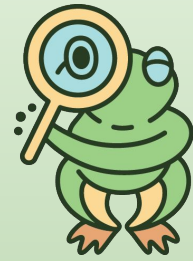
West Bend School District

nature-based 4K program at Riveredge Nature Center.

The Riveredge Outdoor Elementary School is a separate program from the 4K program, students must enroll into the

Northern Ozaukee School District.

Frequently asked questions



Start and stop time

We start each day at 8:35 a.m. with drop off beginning at 8:20 a.m.
Dismissal is at 3:35 p.m.

Transportation

In the 22-23 school year we served students from 15 different school districts! Accordingly, we are not able to provide transportation to and from school, but a number of families have organized carpools.



Frequently asked questions

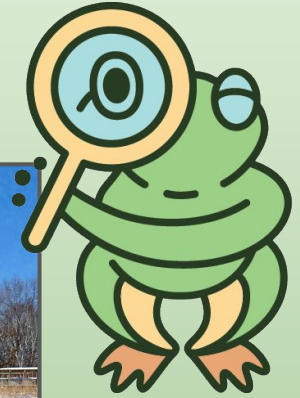
Lunch program - With school loaned Bento Boxes, students and families provide their own lunches, allowing them to be far healthier than public school issued meals.

Calendar - Follows Northern Ozaukee School District (SAME 1st & last days of school, winter & spring breaks, holidays). Some Teacher Work Days & days off are different from NOSD. Our calendar for each year is finalized and approved by our Governance Council at the February meeting. Here is a link to the [22-23 Calendar](#) for reference.

Frequently asked questions

What do students do in winter?

Our motto is that there is no such thing as bad weather; only bad gear. Our students still spend time outside in the winter, with hikes, animal track identification, read alouds, vocabulary lessons, phonemic awareness...and the opportunities to sled, cross country ski, and snowshoe!



Frequently asked questions

Is the Riveredge School for students who are struggling? Is it an alternative school?

Students choose The Riveredge School, and all charter schools, for a variety of reasons. Some simply prefer the model over the traditional public model; others prefer the model because the traditional model isn't the best fit for their student. The model of The Riveredge School; with increased exercise and outdoor time, hands-on project based learning, small class sizes and small group instruction is beneficial to all students. Parents find that our close knit community a place that allows students to better connect with their peers.

The Riveredge School is not an alternative school; it is a public charter school. Students are expected to accomplish the same learning targets as their peers in a traditional public school.

Testimonials

"This is the third year that our son has been attending ROLES and we couldn't be happier. His academic growth has been significant. He is thriving both socially and in his understanding of the world around him. We are grateful to have this amazing opportunity!" J. Lloyd-Parent

Our children have attended ROLES for the last two years and we LOVE this school! There are wonderful teachers fabulous opportunities and the beautiful outdoor education environment. ROLES parent

My son looks forward to school now that he has attended Riveredge which is not the case at his former school. Interest led learning is ideal for him. Parent of a 4th grader





Our school hallways are like none other!